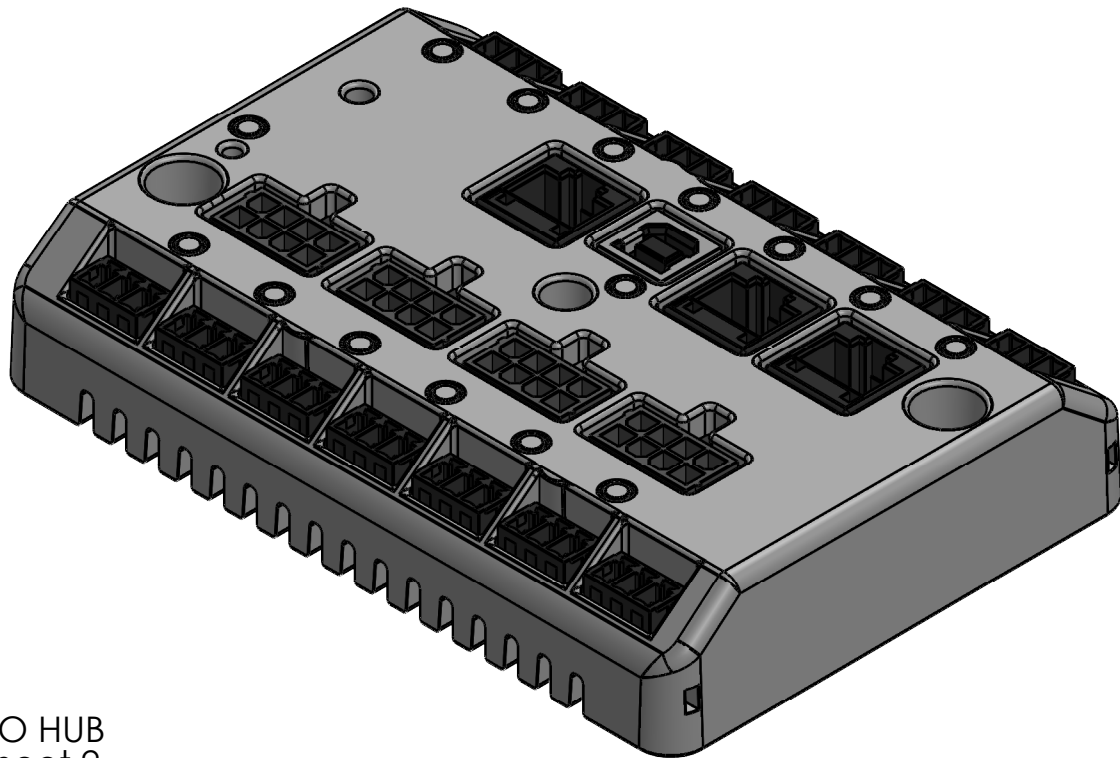
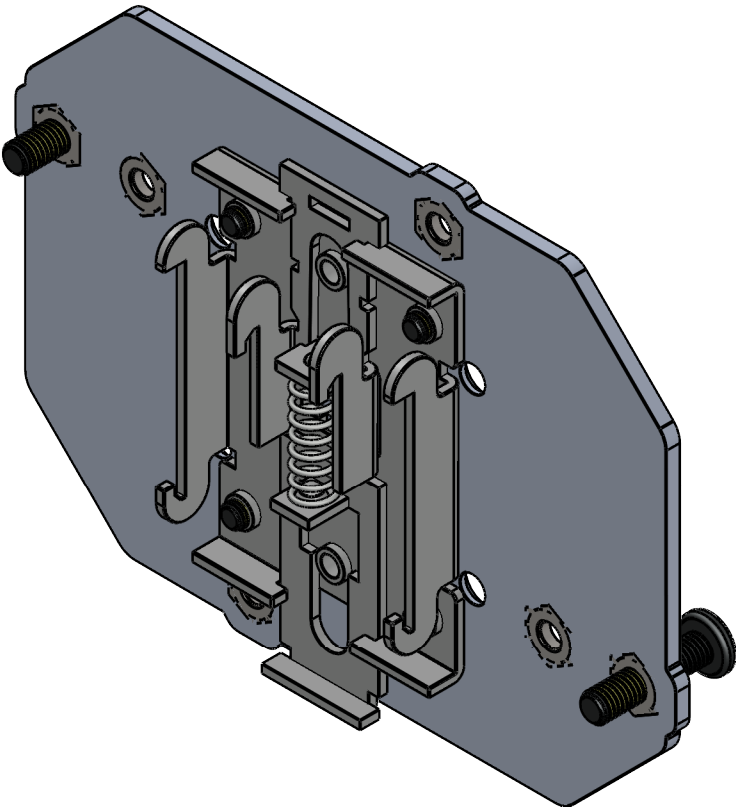


ClearPath-IP Accessories



I/O HUB
Sheet 2

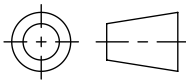


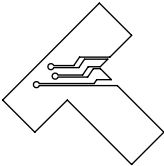
DIN-MNT Mounting Kit
Sheet 3

SHEET SCALE 1:1

Teknic, Incorporated
Victor, NY 14564 USA

This document and related electronic files are the sole property of Teknic, Incorporated and contain proprietary information.


Third-Angle Projection



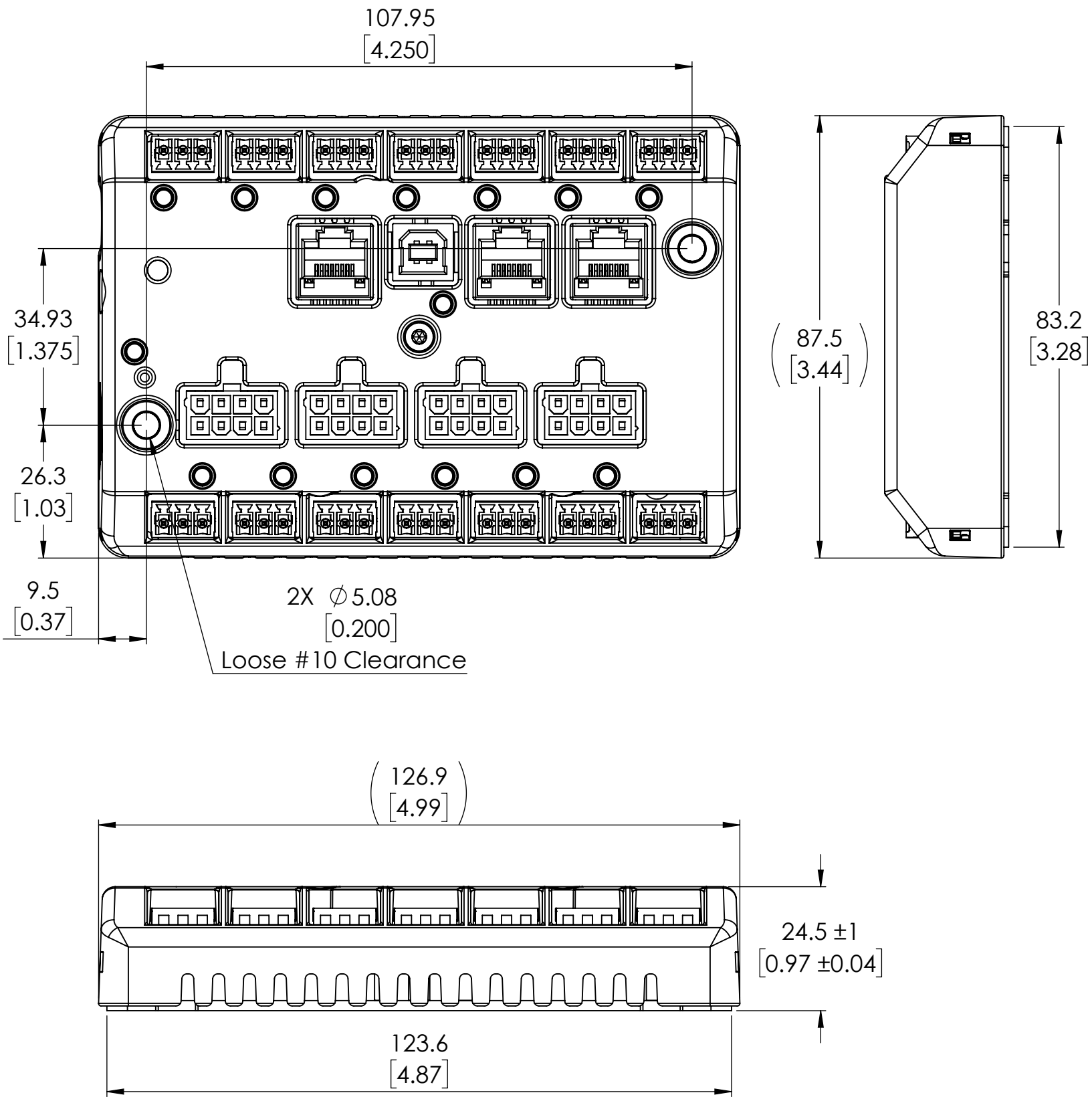
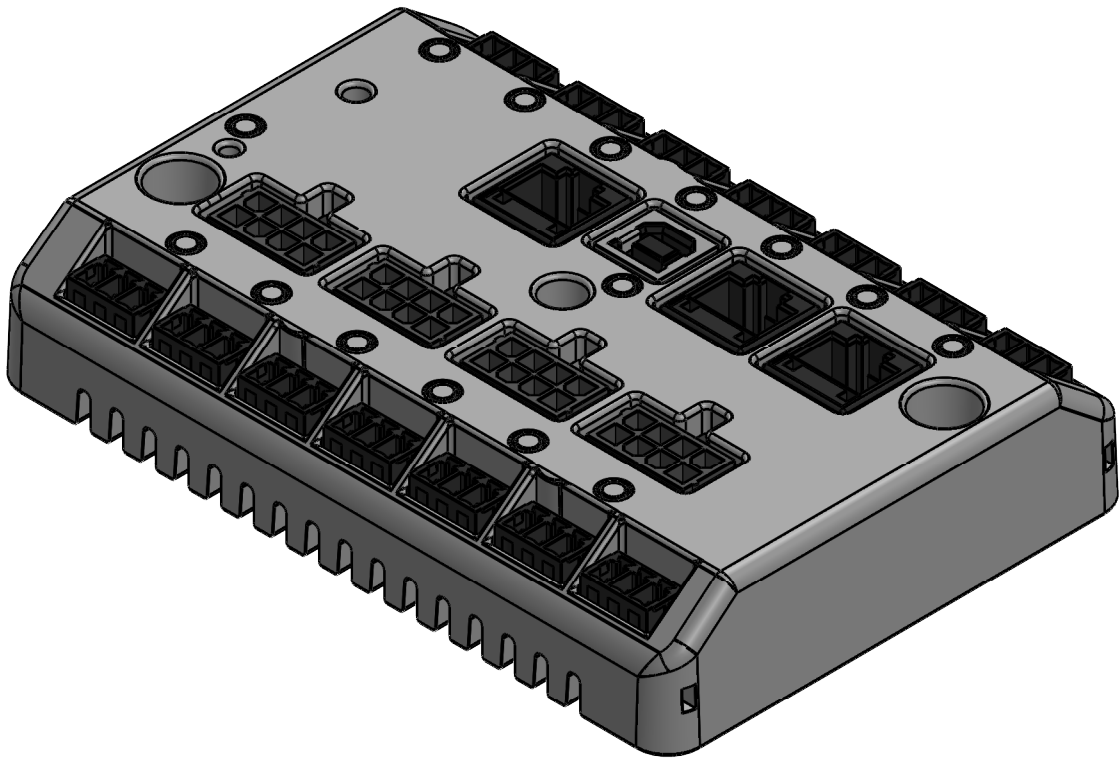
Additional documentation including product specifications, up-to-date compliance information, and manuals can be downloaded from Teknic's website.
Visit <https://www.teknic.com/> to access that documentation.

I/O HUB

ClearPath-IP I/O and Motor Hub

Part Numbers
IO-HUB-2-R
IO-HUB-4-R
IO-HUB-4-E

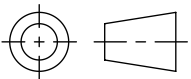
All dimensions are in mm [inch] unless otherwise noted.
Sheet Scale 1:1

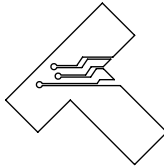


Unless otherwise specified, untoleranced
dimensions default to:
X.X: $\pm .5\text{mm}$ [0.020]
X.XX: $\pm .25\text{mm}$ [0.010]

Teknic, Incorporated
Victor, NY 14564 USA

This document and related electronic files are the sole property of Teknic, Incorporated and contain proprietary information.


Third-Angle Projection



Additional documentation including product specifications, up-to-date compliance information, and manuals can be downloaded from Teknic's website.
Visit <https://www.teknic.com/> to access that documentation.

DWG. NO./REV

D1268/A

TITLE: I/O HUB and Mounting Accessory

2 of 3
Sheets

Mounting Kit

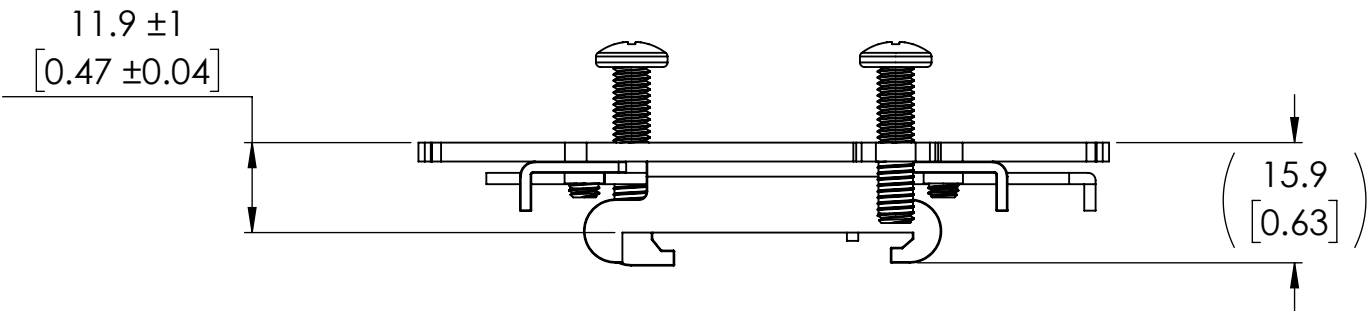
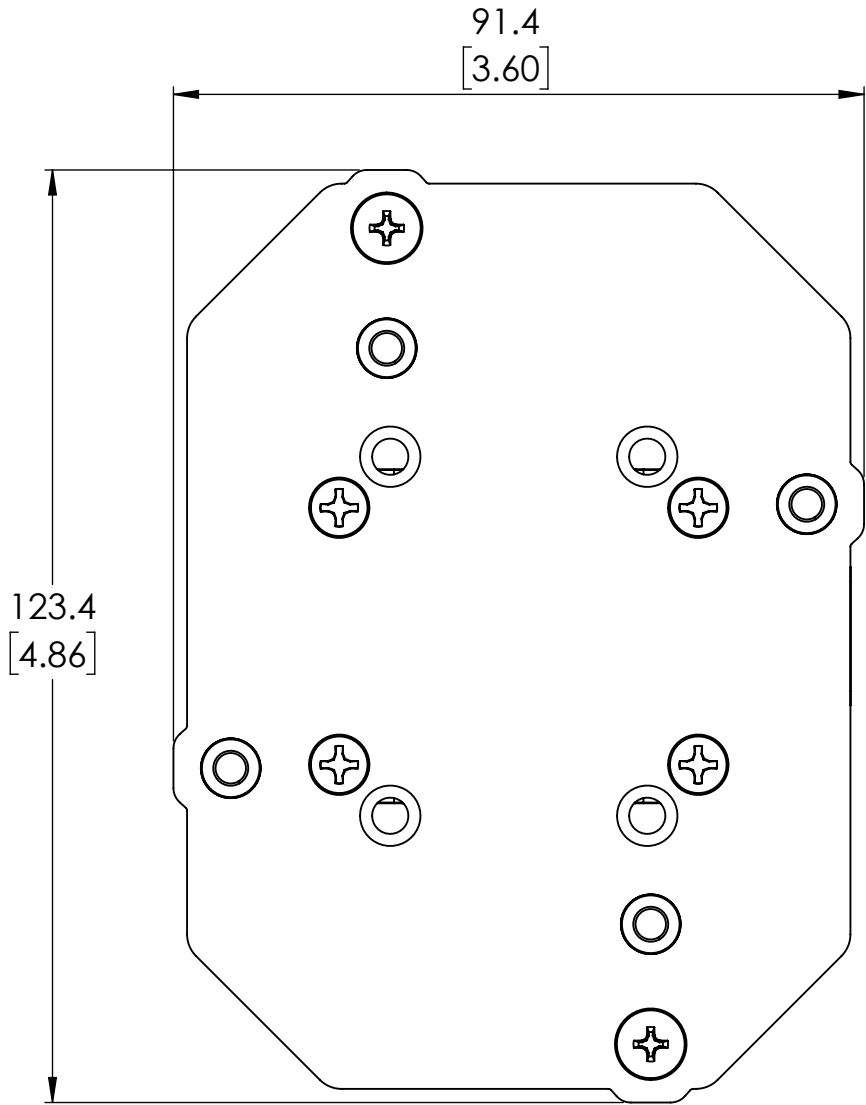
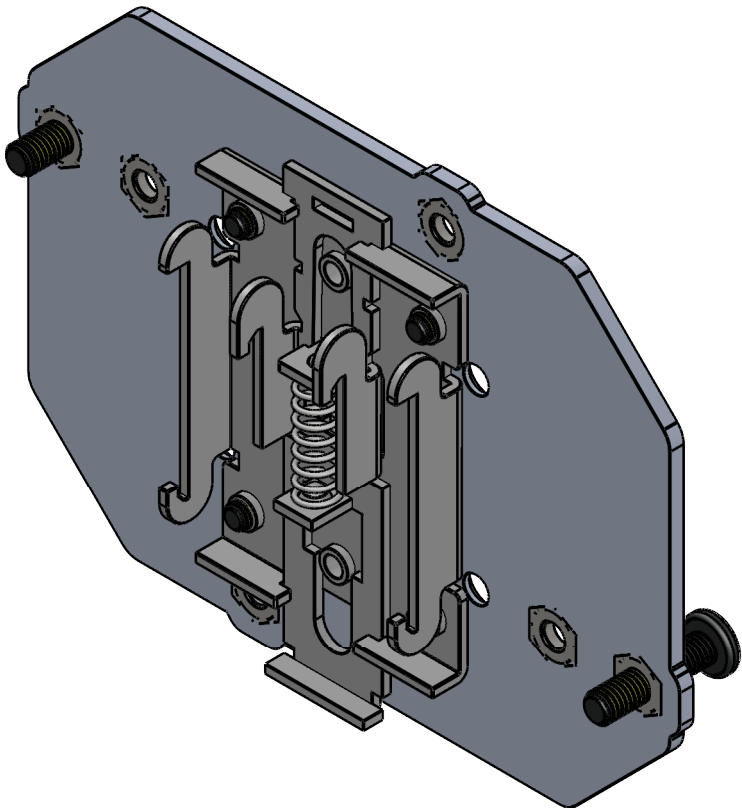
PN: DIN-MNT

Hardware included: 2 #10-32 x 0.81" Pan Head Screws, 4 M4-.7 x 7mm Flat Head Screws
Mounts I/O Hub to 35mm DIN Rail (not included).

I/O HUB Mounting and Clearance Notes

- Leave a minimum of 1.5" (38.1mm) clearance around all I/O HUB surfaces (except the mounting plate) for appropriate ventilation.
- Provide appropriate clearance for top-mounted cables. Note: some Ethernet and USB cables may require up to 2" clearance."

All dimensions are in mm [inch] unless otherwise noted.
Sheet Scale 1:1

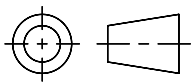


Unless otherwise specified, untoleranced
dimensions default to:
X.X: ± .5mm [0.020]
X.XX: ± .25mm [0.010]

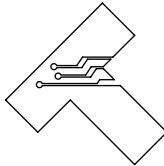
Teknic, Incorporated

Victor, NY 14564 USA

This document and related electronic files are the sole property of Teknic,
Incorporated and contain proprietary information.



Third-Angle Projection



Additional documentation including product specifications, up-to-date compliance information, and manuals can be downloaded from Teknic's website.
Visit <https://www.teknic.com/> to access that documentation.

DWG. NO./REV

D1268/A

TITLE: I/O HUB and Mounting Accessory

3

of 3
Sheets