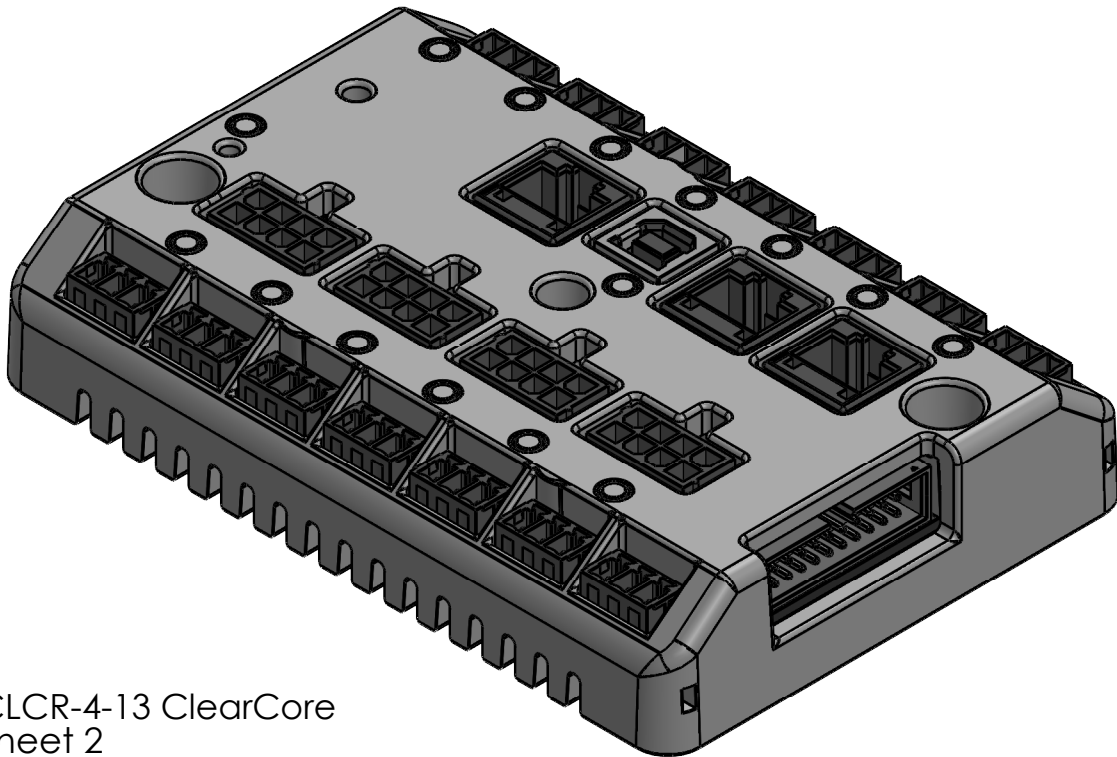
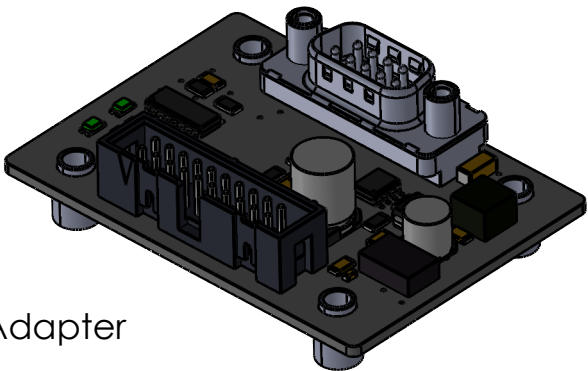


Teknic ClearCore[®] & Accessories

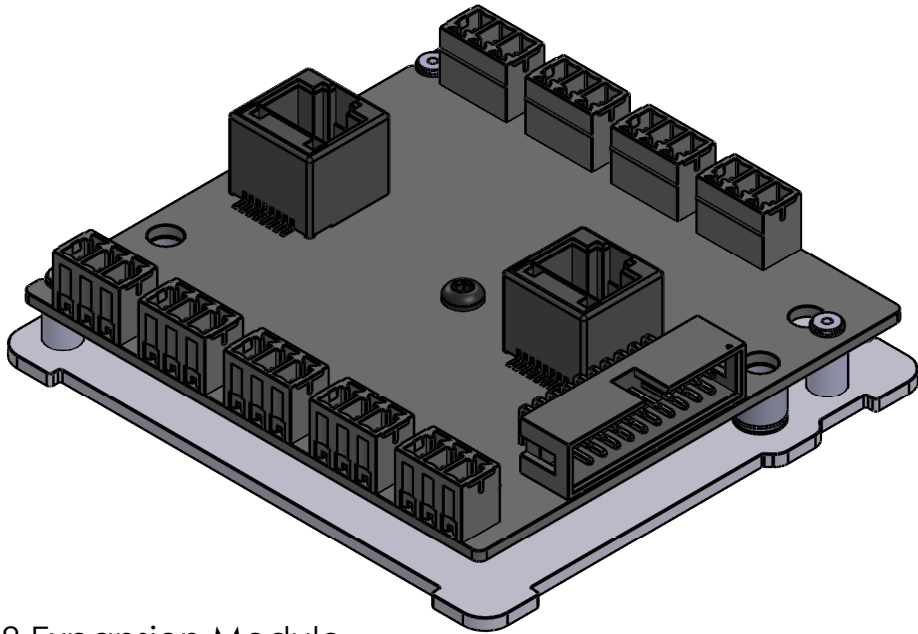
Find ClearCore specifications, manuals, and wiring documentation here:
<https://www.teknic.com/products/io-motion-controller/clcr-4-13>



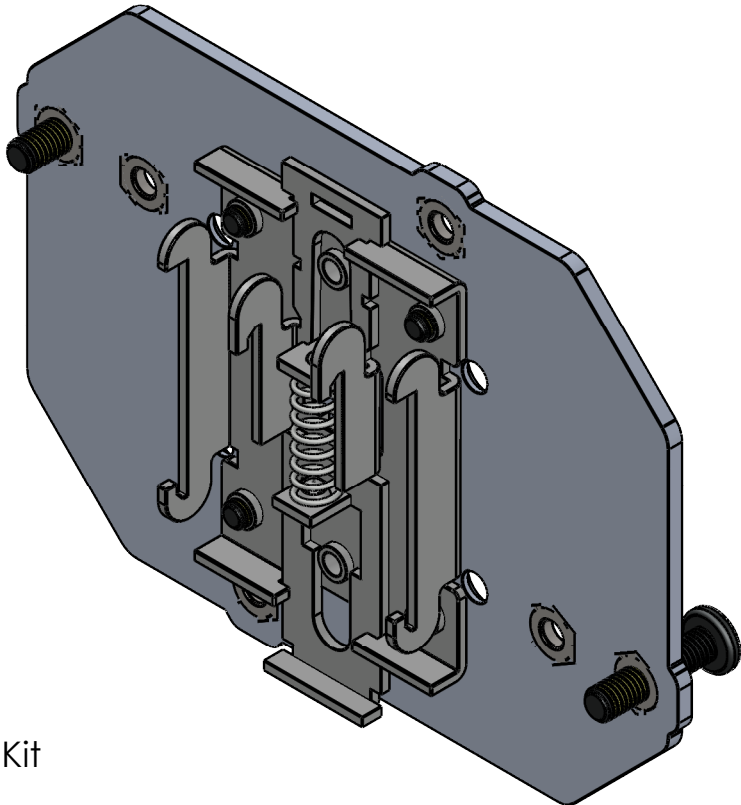
CLCR-4-13 ClearCore
Sheet 2



CL-ENCNDR-DFIN
Encoder Input Adapter
Sheet 5



CCIO-8 Expansion Module
Sheet 3

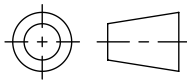


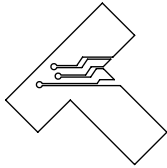
DIN-MNT Mounting Kit
Sheet 4

SHEET SCALE 1:1

Teknic, Incorporated
Victor, NY 14564 USA

This document and related electronic files are the sole property of Teknic, Incorporated and contain proprietary information.


Third-Angle Projection



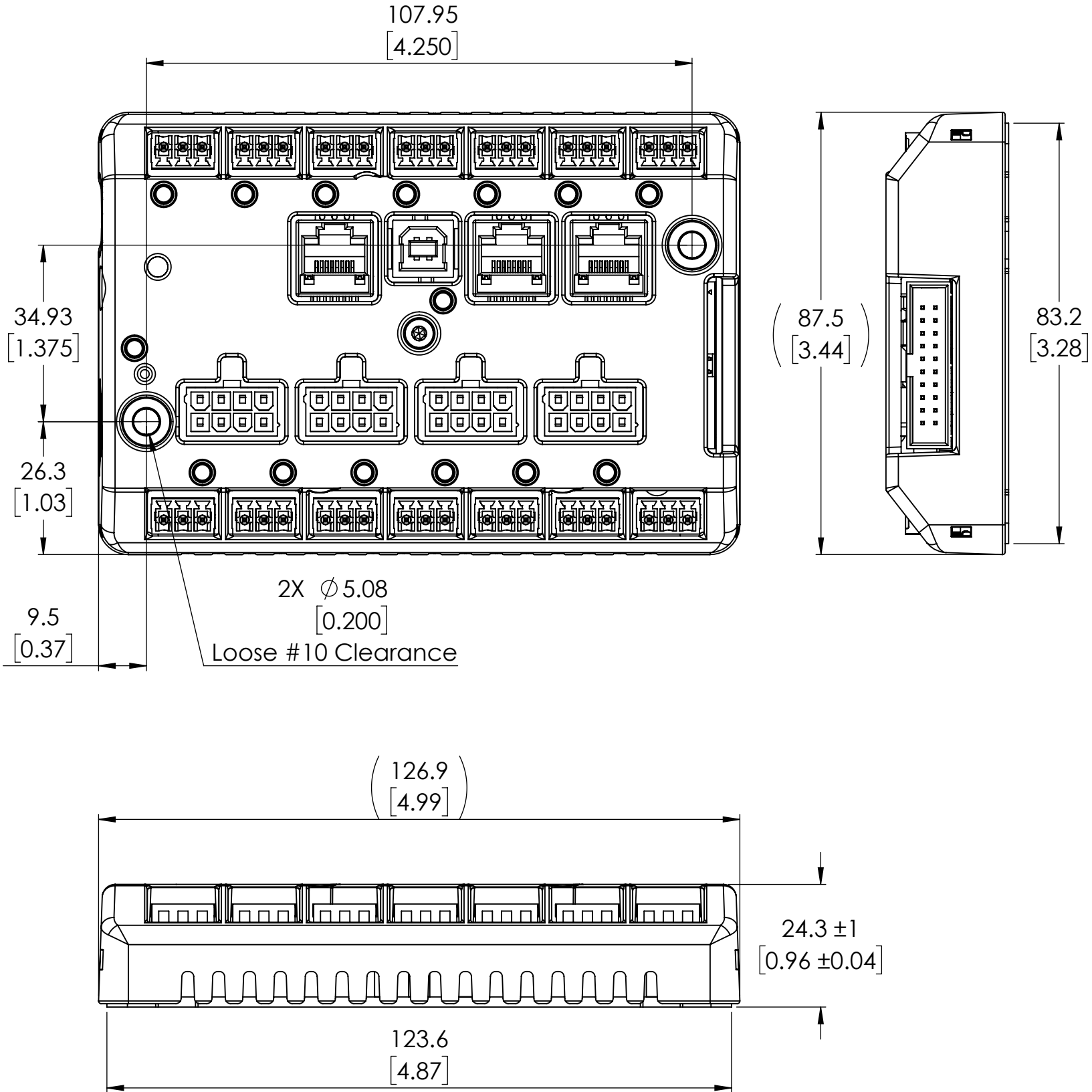
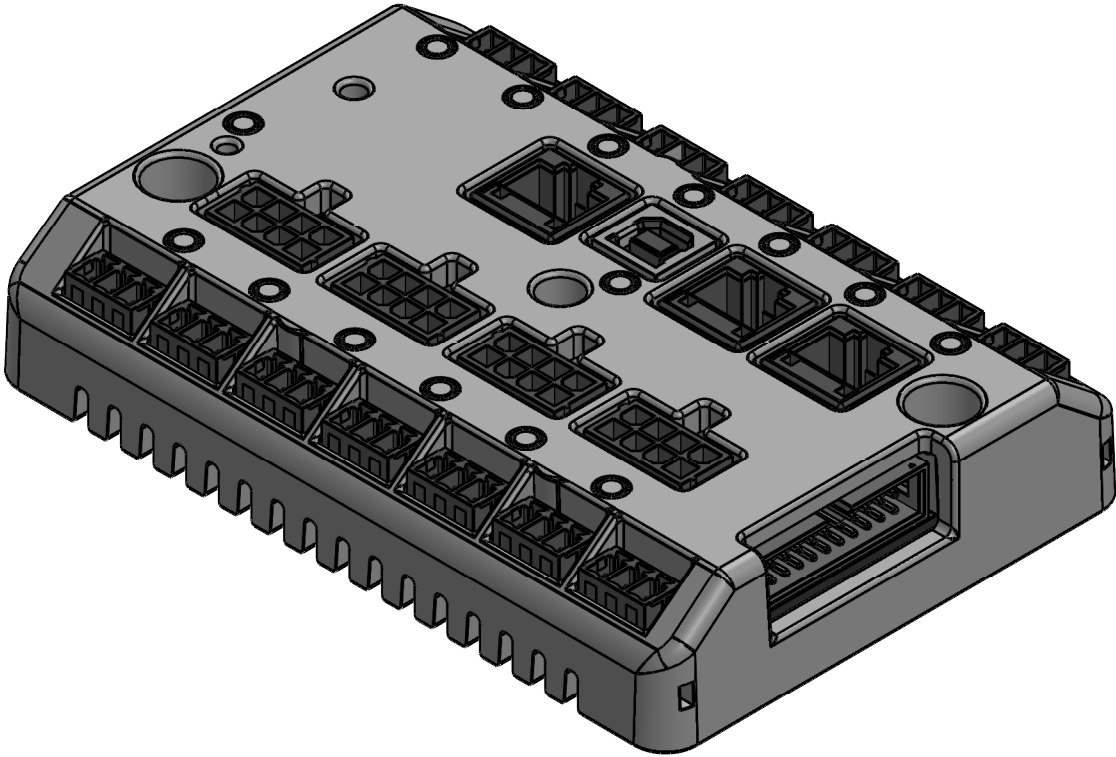
Additional documentation including product specifications, up-to-date compliance information, and manuals can be downloaded from Teknic's website.
Visit <https://www.teknic.com/> to access that documentation.

ClearCore[®]

Motion + I/O Controller

PN: CLCR-4-13

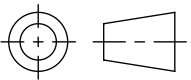
All dimensions are in mm [inch] unless otherwise noted.
Sheet Scale 1:1

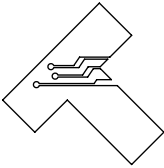


Unless otherwise specified, untoleranced dimensions default to:
X.X: \pm .5mm [0.020]
X.XX: \pm .25mm [0.010]

Teknic, Incorporated
Victor, NY 14564 USA

This document and related electronic files are the sole property of Teknic, Incorporated and contain proprietary information.


Third-Angle Projection



Additional documentation including product specifications, up-to-date compliance information, and manuals can be downloaded from Teknic's website.
Visit <https://www.teknic.com/> to access that documentation.

DWG. NO./REV

D1208/F

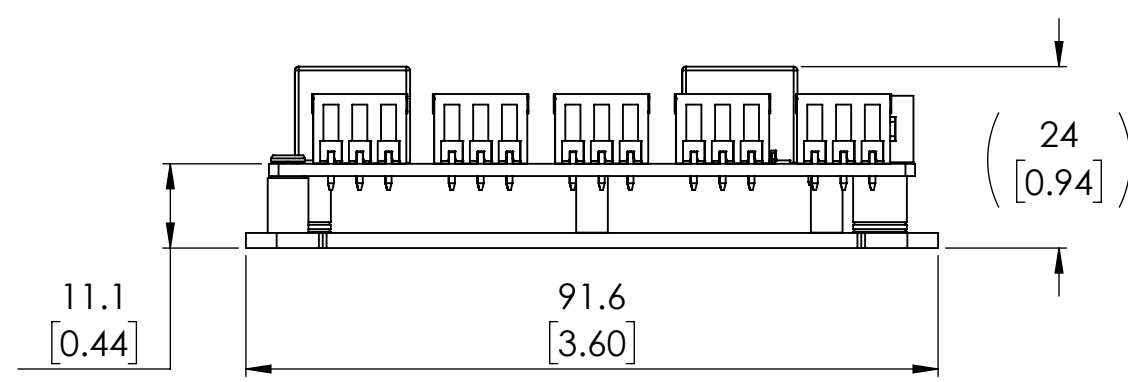
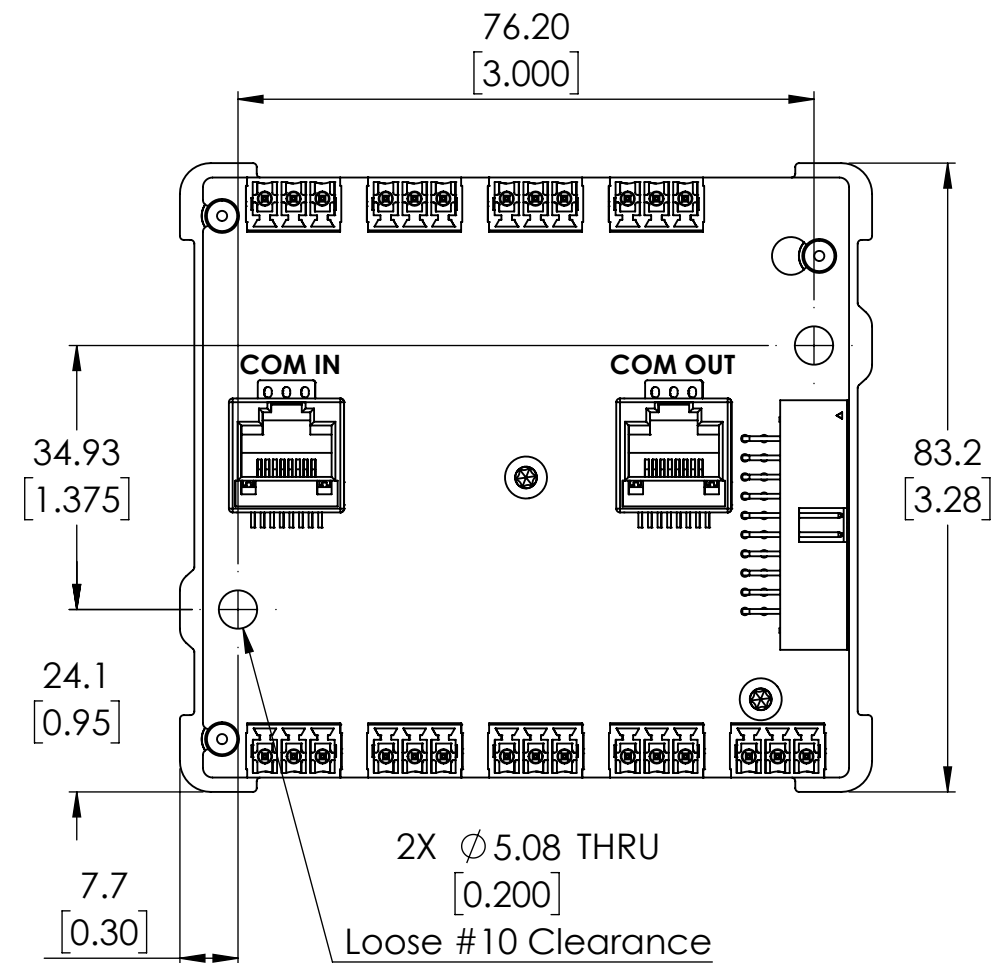
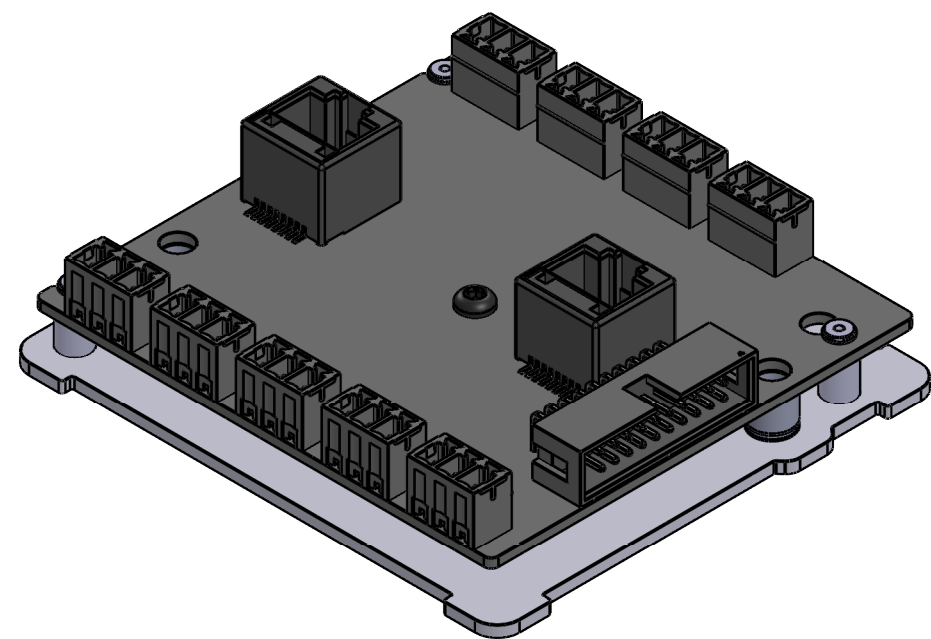
TITLE: ClearCore & Accessories

2 of 5 Sheets

Digital I/O Expansion Module

PN: CCIO-8

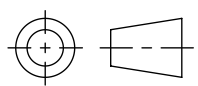
All dimensions are in mm [inch] unless otherwise noted.
Sheet Scale 1:1

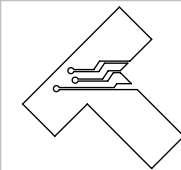


Unless otherwise specified, untoleranced
dimensions default to:
X.X: ± .5mm [0.020]
X.XX: ± .25mm [0.010]

Teknic, Incorporated
Victor, NY 14564 USA

This document and related electronic files are the sole property of Teknic, Incorporated and contain proprietary information.


Third-Angle Projection



Additional documentation including product specifications, up-to-date compliance information, and manuals can be downloaded from Teknic's website.
Visit <https://www.teknic.com/> to access that documentation.

DWG. NO./REV
D1208/F

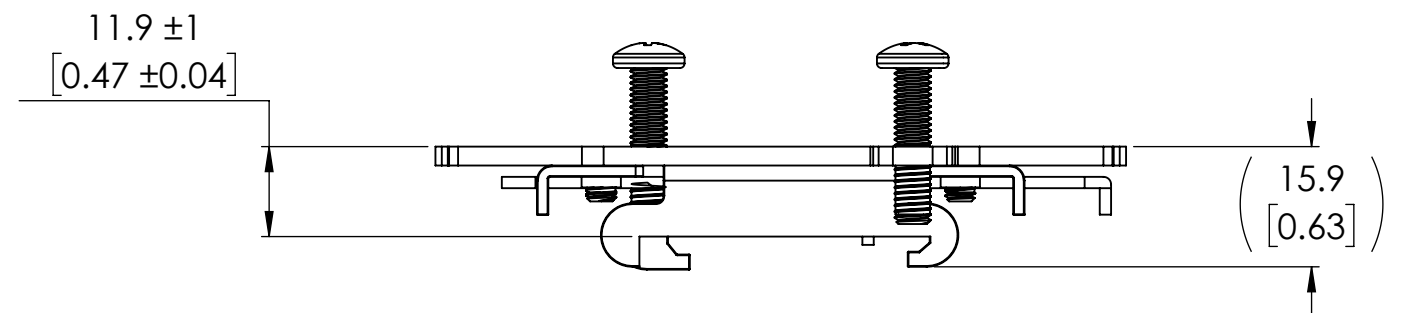
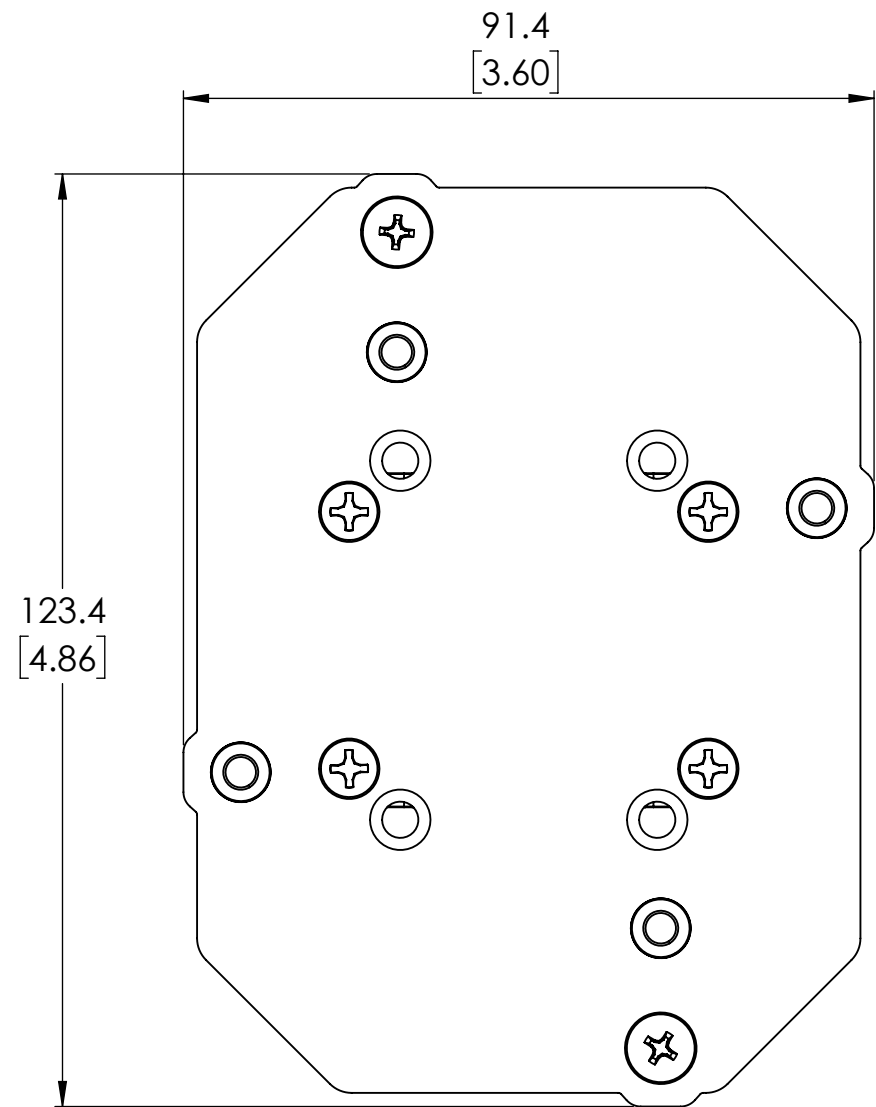
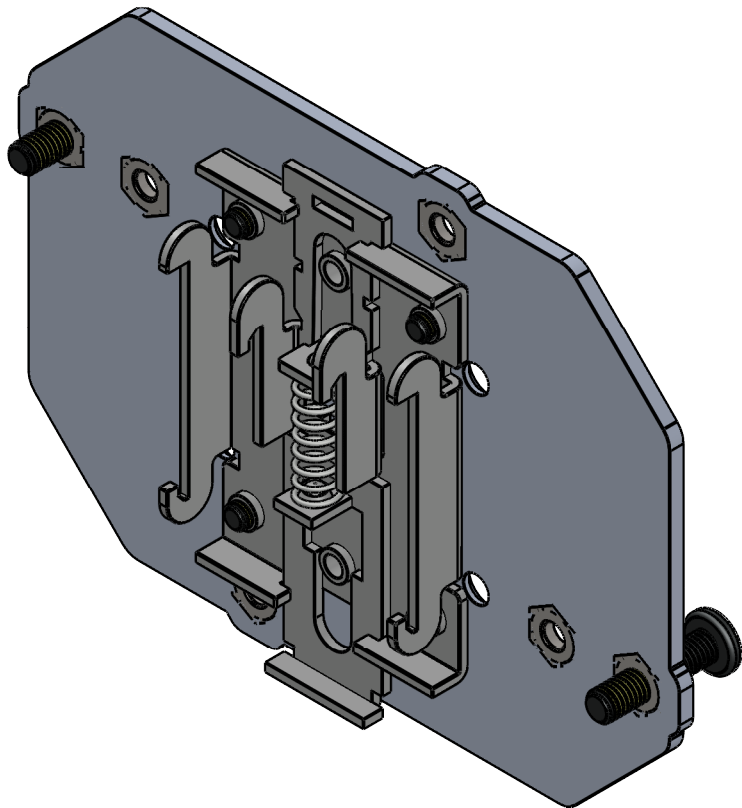
TITLE: ClearCore & Accessories

3
of 5
Sheets

Mounting Kit

PN: DIN-MNT

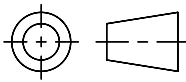
Hardware included: 2 #10-32 x 0.81" Pan Head Screws, 4 M4-.7 x 7mm Flat Head Screws
Mounts ClearCore or Expansion Module to 35mm DIN Rail (not included).
See manual for all possible mounting orientations.
All dimensions are in mm [inch] unless otherwise noted.
Sheet Scale 1:1

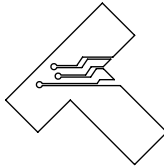


Unless otherwise specified, untoleranced
dimensions default to:
X.X: ± .5mm [0.020]
X.XX: ± .25mm [0.010]

Teknic, Incorporated
Victor, NY 14564 USA

This document and related electronic files are the sole property of Teknic,
Incorporated and contain proprietary information.


Third-Angle Projection



Additional documentation including product specifications, up-to-
date compliance information, and manuals can be downloaded
from Teknic's website.
Visit <https://www.teknic.com/> to access that documentation.

DWG. NO./REV

D1208/F

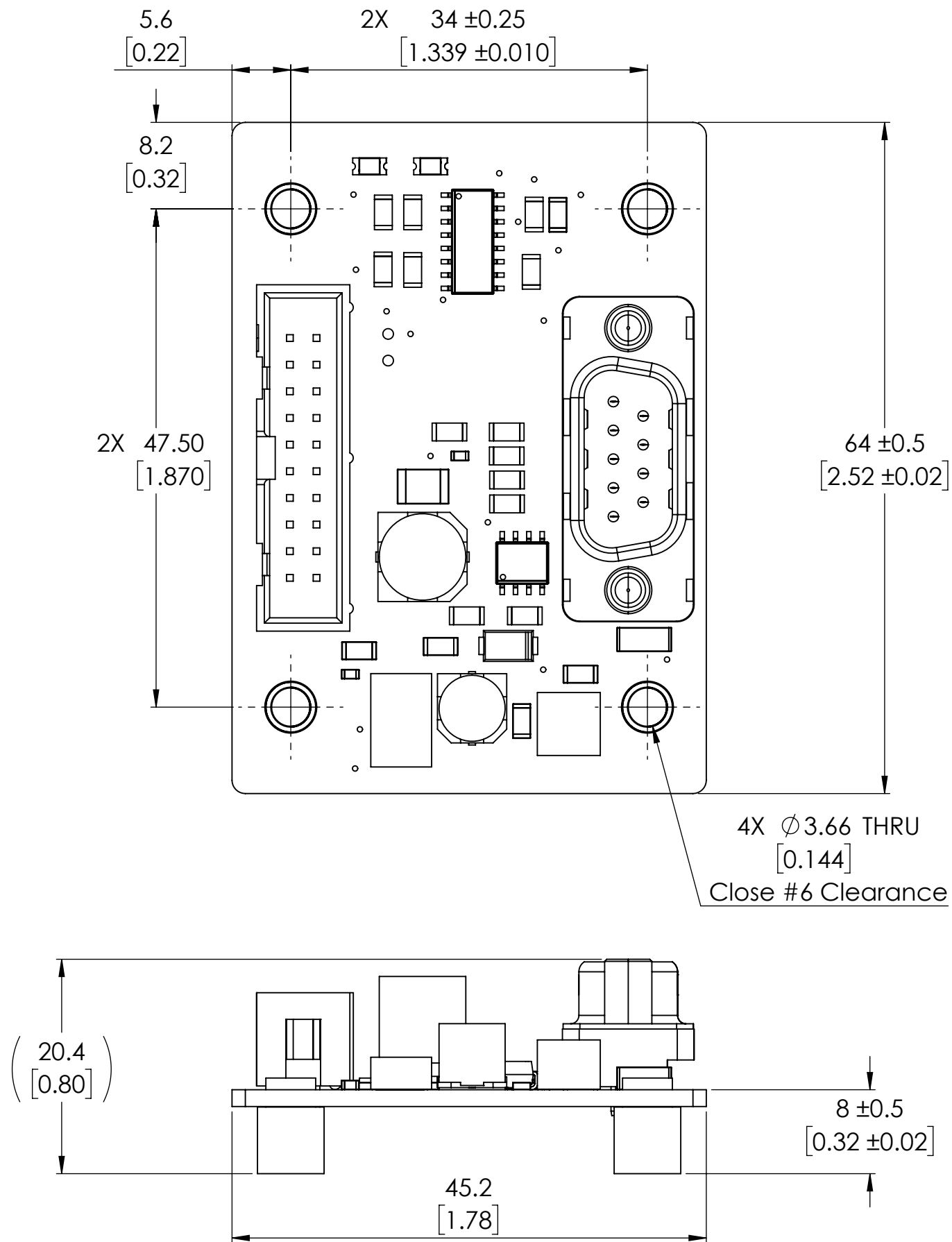
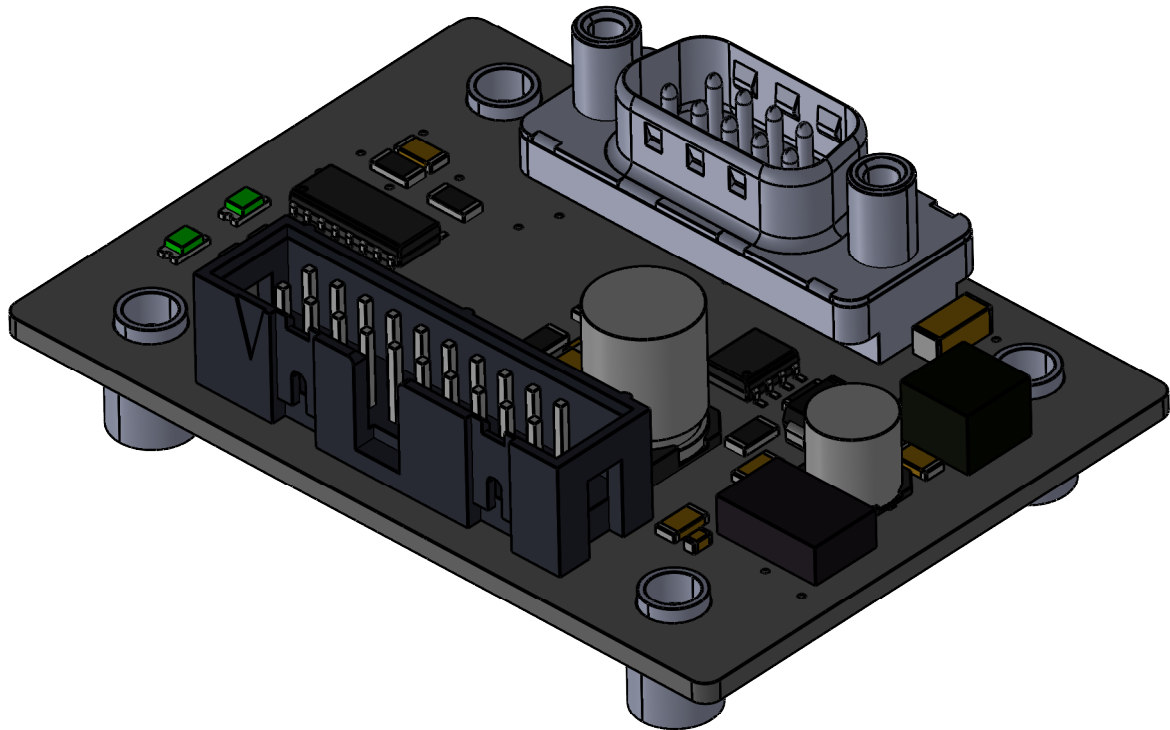
TITLE: ClearCore & Accessories

4
of 5
Sheets

Encoder Input Adapter

PN: CL-ENCDR-DFIN

All dimensions are in mm [inch] unless otherwise noted.
Sheet Scale 2:1

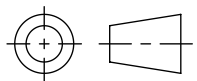


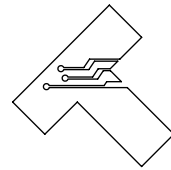
Unless otherwise specified, untoleranced
dimensions default to:
X.X: ± .5mm [0.020]
X.XX: ± .25mm [0.010]

Teknic, Incorporated

Victor, NY 14564 USA

This document and related electronic files are the sole property of Teknic, Incorporated and contain proprietary information.


Third-Angle Projection



Additional documentation including product specifications, up-to-date compliance information, and manuals can be downloaded from Teknic's website.
Visit <https://www.teknic.com/> to access that documentation.

DWG. NO./REV

D1208/F

TITLE: ClearCore & Accessories

5 of 5 Sheets