

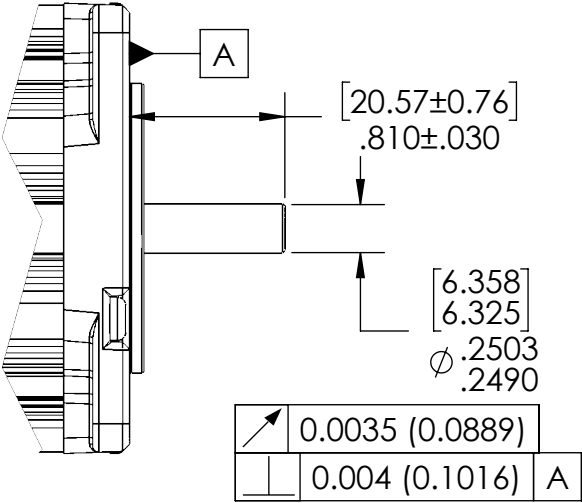
Teknic ClearPath[®]

Fractional HP, DC Input

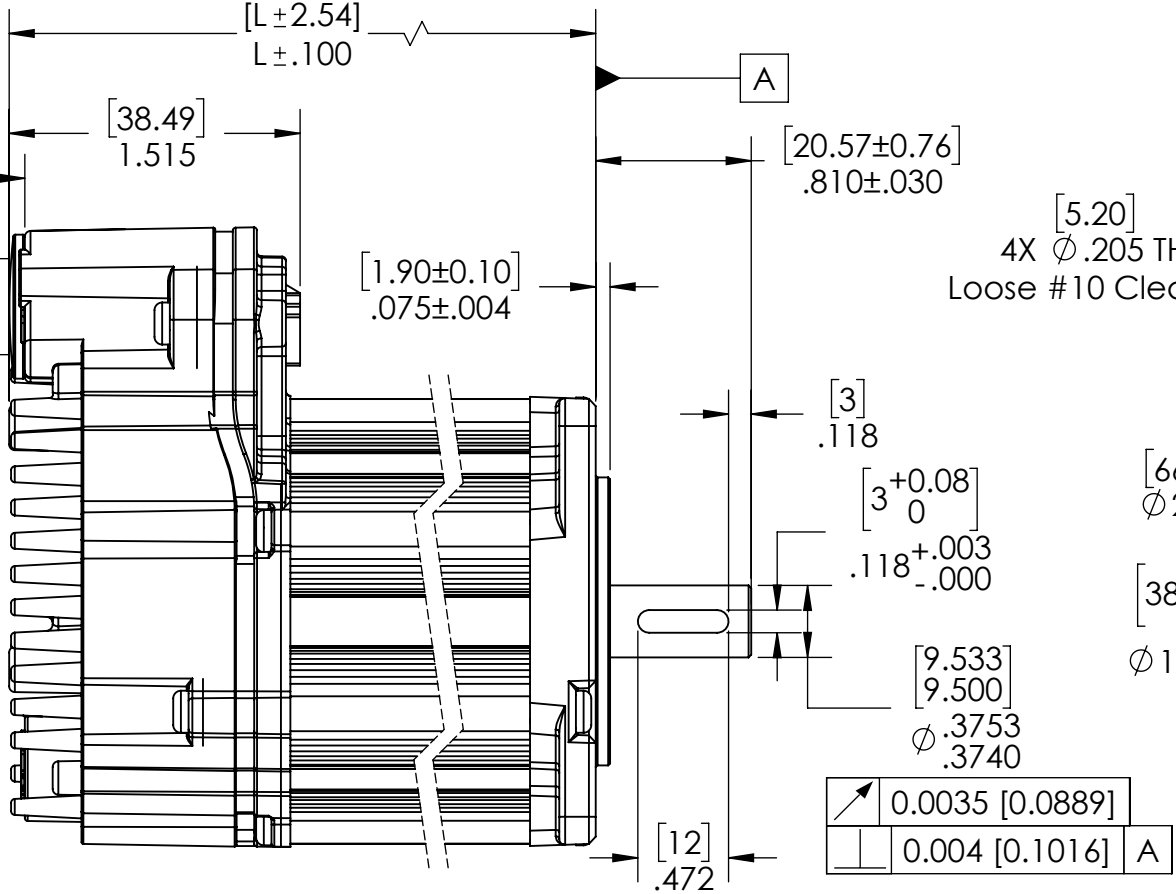
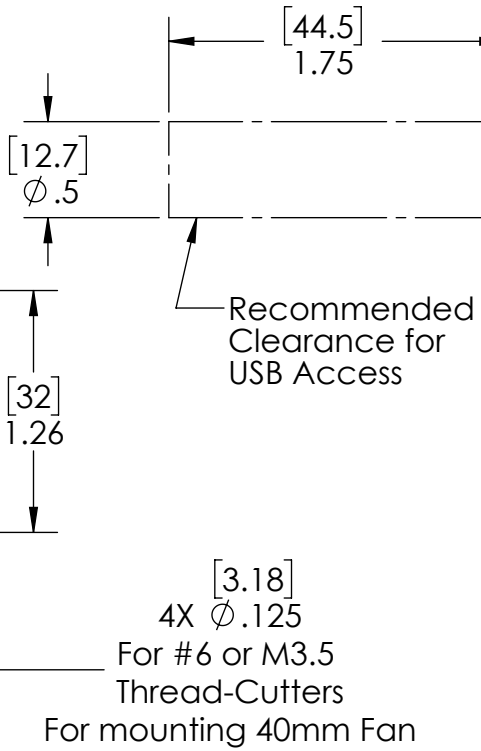
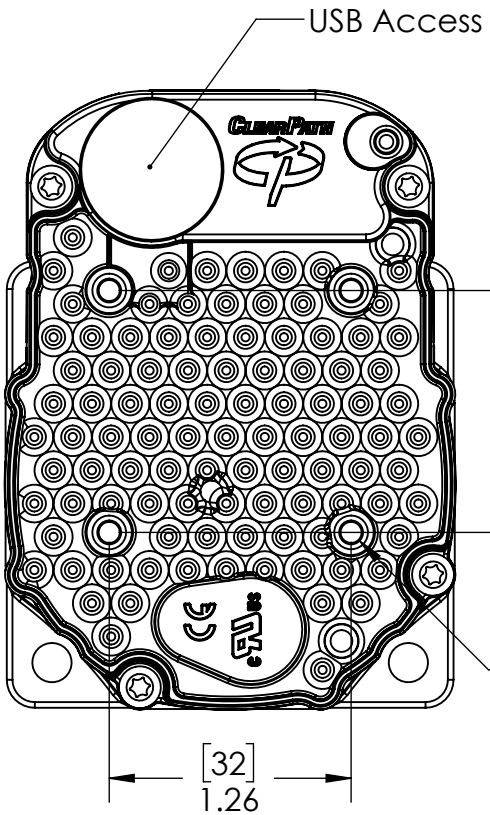
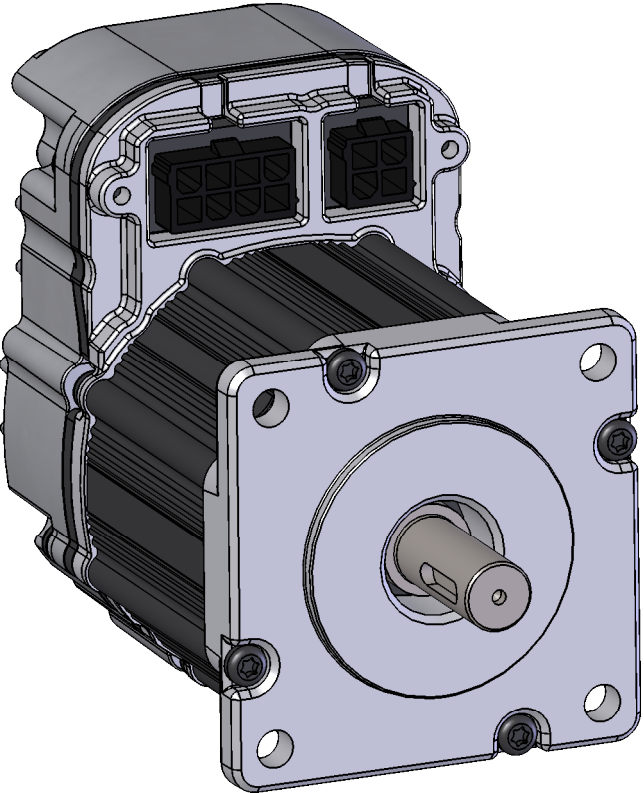
NEMA 23

- All dimensions are in inch [mm] unless otherwise noted.
- Sheet Scale 1:1
- Undimensioned features are per 3D file for model of interest for reference use.
- Unless otherwise specified untoleranced dimensions are nonbasic and default to:
X.XX: ± .010" [0.25mm]
X.XXX: ± .005" [0.125mm]
Angles: ± 1°

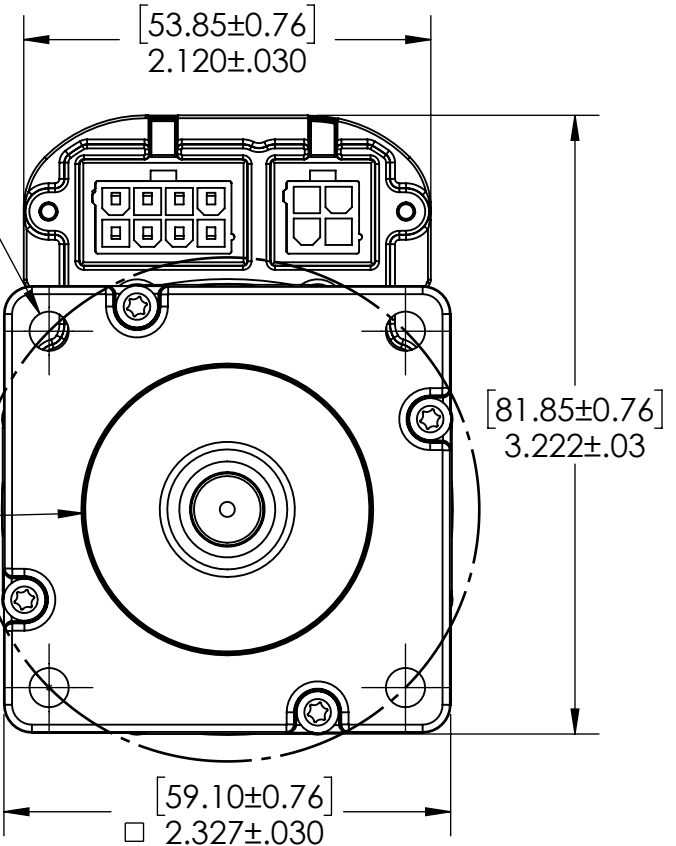
Model Number	L
CPM-____-231-_-_-	3.339 [84.81]
CPM-____-232-_-_-	4.088 [103.83]
CPM-____-233-_-_-	4.836 [122.83]
CPM-____-234-_-_-	5.584 [141.83]



Optional 1/4" Full Round Shaft (No keyway)
Available for 231 and 232 Models



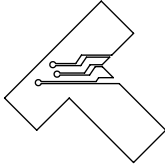
$[5.20]$
4X $\phi .205$ THRU
Loose #10 Clearance



Teknic, Incorporated
 Victor, NY 14564 USA

This document and related electronic files are the sole property of Teknic, Incorporated and contain proprietary information.

Third-Angle Projection
 Interpret Geometric Tolerances per ANSI/ASME Y14.5 (2009)



Additional documentation including product specifications, up-to-date compliance information, and manuals can be downloaded from Teknic's website. Visit <https://www.teknic.com/> to access that documentation.

DWG. NO./REV
D1171/1

TITLE: **23XX ClearPath Motor Family**